



# Revolutionise performance, optimise decision making.

Next generation surveying and geospatial software from LISTECH.



[www.listech.com](http://www.listech.com)

# Today more than ever before, our customers need to rely on seamless workflows for all projects.

To improve project efficiencies, we have developed LISTECH Neo - a comprehensive, integrated software solution that simplifies the most complex jobs for faster results.



## Neo geospatial software

Neo is user-friendly geospatial software that transforms raw data into useful information, with the capability to handle large 3D datasets, versatile 3D and 2D viewing, and extensive functionality.

Neo's flexible user attribute definition system means tasks that were considered challenging in the past can now be completed with ease. User Attribute definition opens new opportunities for customers to undertake attribute rich projects. With comprehensive exchange of data between CAD, GIS, BIM, surveying instruments and other systems, data can be confidently imported and exported to client requirements.

A flexible modular design allows our customers to purchase the functionality required for specific business needs, and our subscription based licensing model allows our customers to scale up as business requirements change.



## Comprehensive quality

Neo contains an integrated measurement database for the adjustment and processing of field surveys and for the quality control that comes from measurement/object relationships. Neo applies rigorous geodetic computations and supports a wide range of map projections, ellipsoids, transformations and geoid models.



## A world-wide solution

Designed to facilitate global project collaboration and use; units, precisions, roundings, coordinate systems, display options, text styles and reports are all configurable allowing local presentation requirements to be met anywhere in the world.

The Neo database supports the Unicode® character set and the user interface can be translated to any language.



## Committed to continuous improvement

Our development team continue to develop new features while maintaining focus on developing easy-to-use, integrated surveying and geospatial software.



## Simply flexible

AutoCAD®, MicroStation, Esri, MapInfo, buildingSMART IFC, KML, Leica, Trimble, XML and user defined text files are just some of the formats supported by Neo that are often required by our customers in projects. Neo seamlessly transfers data to and from various data sources allowing flexibility in both the source and delivery formats. Not only for data from different instrument types, but also from multiple sites and survey teams, Neo is compatible with major survey instruments and software.



## Greater transparency, improved productivity

Neo has an integrated 3D and 2D environment to help our customers visualise the often complex, real world models. This visual reality combined with extremely fast graphics and streamlined workflows ensures optimal productivity.

Neo makes productive use of images from imaging total stations by creating points, lines and polygons directly from overlapping images. This helps avoid unnecessary field revisits and is useful for façade surveys, asset collection and surveys with time or safety constraints.



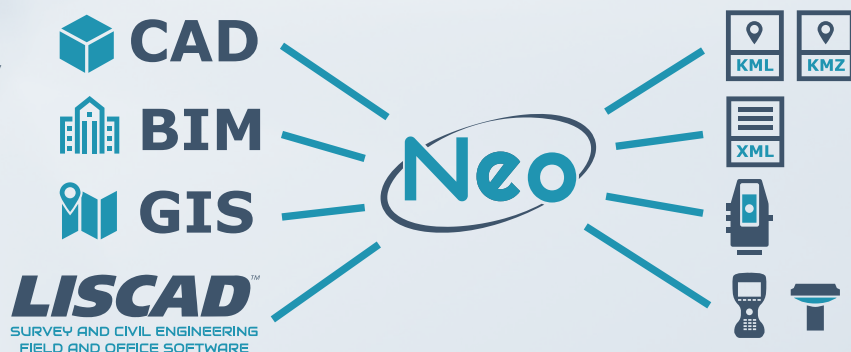
## Tailored for more efficiency

Our customers are active across a range of geospatial industries, and what our customers need from a software solution is equally diverse. Neo makes it easy to define attributes. Attributes can be automatically created by importing from another system or set to automatically populate with default values and optionally increment as objects are created. Neo projects are template based, allowing for full customisation to the needs of different clients or work practices. Inbuilt project templates are included for quick and easy initial project creation.



## Integration for greater functionality

Seamlessly exchange data between attribute rich systems, such as GIS BIM, CAD and field sensors.



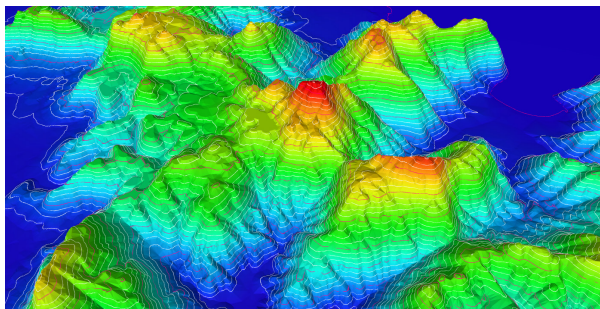


## Neo modules

Neo delivers a comprehensive range of integrated modules to allow our customers to work faster and more efficiently. A modular design offers the flexibility to purchase modules with extra functionality as required.

### Terrain

Create and edit terrain models, contours and contour labels at user defined intervals. The modelling algorithm honours breaklines and boundaries defined in the project, while the number and size of terrain models supported is virtually unlimited. Terrain models can be intersected to create polygons of cut and fill areas, as well as to create lines of no cut / no fill, where the terrain models intersect.

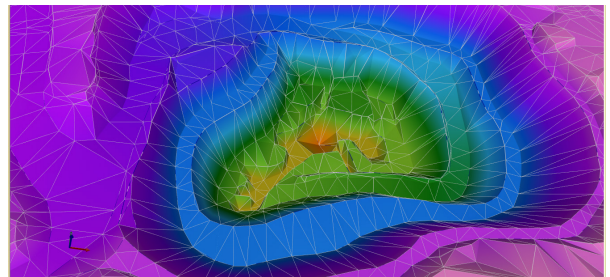


### Solve

Rigorous geodetic coordinate geometry (COGO) computations based on a selected coordinate system, for the creation and editing of geospatial objects, including points, lines, polygons, shapes, text and images.

### Volume

Report on the computation of volumes and areas of cut / fill from terrain models. Includes the ability to compute ground or grid volumes if the project coordinates are on a projection.



### Image Connect

Online connection to WMTS and WMS based image services including HxIP, NearMap and ESRI World Imagery. The images can be used as a background in 'plan' view and can be draped over terrain models in 3D view.





## Image Xtract

Extract 3D points, lines and polygons from overlapping images captured with an imaging total station.



## Transform

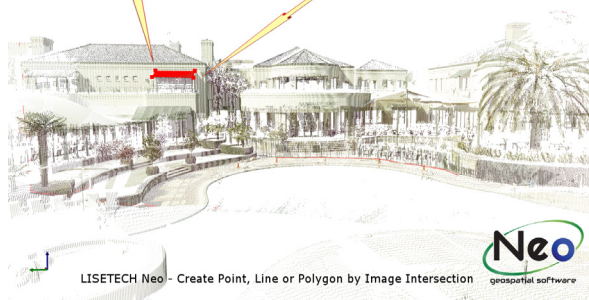
Computation or entry of 3D or 2D transformation parameters and the transformation of coordinates between coordinate systems. Transformation parameters can be easily computed from coordinate pairs in different coordinate systems using the Least Squares principle.

## Adjust

Rigorous Least Squares solutions to adjust field survey measurements in both traverse and network frameworks for horizontal and vertical control.

## Image GeoRef

Import, registration, clipping and display of georeferenced images in ECW, JPEG, TIFF, BMP and PNG formats. The images can be used as a background in 'plan' view and can be draped over terrain models in 3D view.





## Neo Xchange modules

Neo delivers a comprehensive range of integrated modules to allow our customers to work faster and more efficiently. A modular design offers the flexibility to purchase modules with extra functionality as required.

### **Xchange 12D ASCII**

12D Model ASCII import and export functionality.

### **Xchange A-SPEC**

Create files suitable for D-Spec, R-Spec and O-Spec submissions in Australia.

### **Xchange AutoCAD®**

AutoCAD® DWG, DXF and DWF import and export functionality as well as AutoCAD® Line Style and Pattern import functionality.

### **Xchange buildingSMART IFC**

buildingSMART Industry Foundation Class (IFC) import and export functionality. This format is considered the standard for exchanging BIM data.

### **Xchange Esri Geodatabase**

Esri File Geodatabase import and export functionality as well as Esri Grid ASCII import functionality.

### **Xchange Esri Shape**

Esri Shape import and export functionality as well as Esri Grid ASCII import functionality.

### **Xchange KML**

KML and KMZ import and export functionality. These formats are commonly used to exchange data with products like Google Earth.

### **Xchange LandXML**

LandXML import and export functionality - an industry standard for the exchange of land related data.



### **Xchange Leica COE**

Leica Cyclone Object Exchange (COE) import and export functionality is used for exchanging object data with Leica's Cyclone point cloud processing software.

### **Xchange Leica iCON**

Leica iCON build export functionality, includes the transfer of points, attributes and model to iCON build software.

### **Xchange Leica Survey**

Import and export functionality for Leica Captivate and SmartWorx DBX Job, DTM and Codelists formats, as well as for Leica FlexLine XML Jobs, Codelist and HeXML formats.

### **Xchange MapInfo MIF/MID**

MapInfo MIF/MID import and export functionality as well as MapInfo Vertical Mapper Grid import functionality.

### **Xchange MicroStation**

MicroStation DGN import and export functionality.

### **Xchange SG Cadastral**

Import, export and prepare cadastral survey data in a format suitable for submission to the Singapore Land Authority.

### **Xchange Trimble XML**

Trimble Job XML and Feature XML import and export functionality.

### **Xchange User Defined**

Import and export user defined text files in a very flexible way.



# Working with LISTECH

## Training

We have a range of training courses to help train your staff and get the most out of Neo.

## Support

To ensure our customers have the support and tools to get the job done, we provide technical support via telephone and e-mail.



## Contact us:

LISTECH Pty Ltd  
Level 3, 420 St Kilda Road  
Melbourne VIC 3004, Australia  
Australia: 1800 547 832  
International: +61 3 9005 1105  
[info@listech.com](mailto:info@listech.com)  
[www.listech.com](http://www.listech.com)